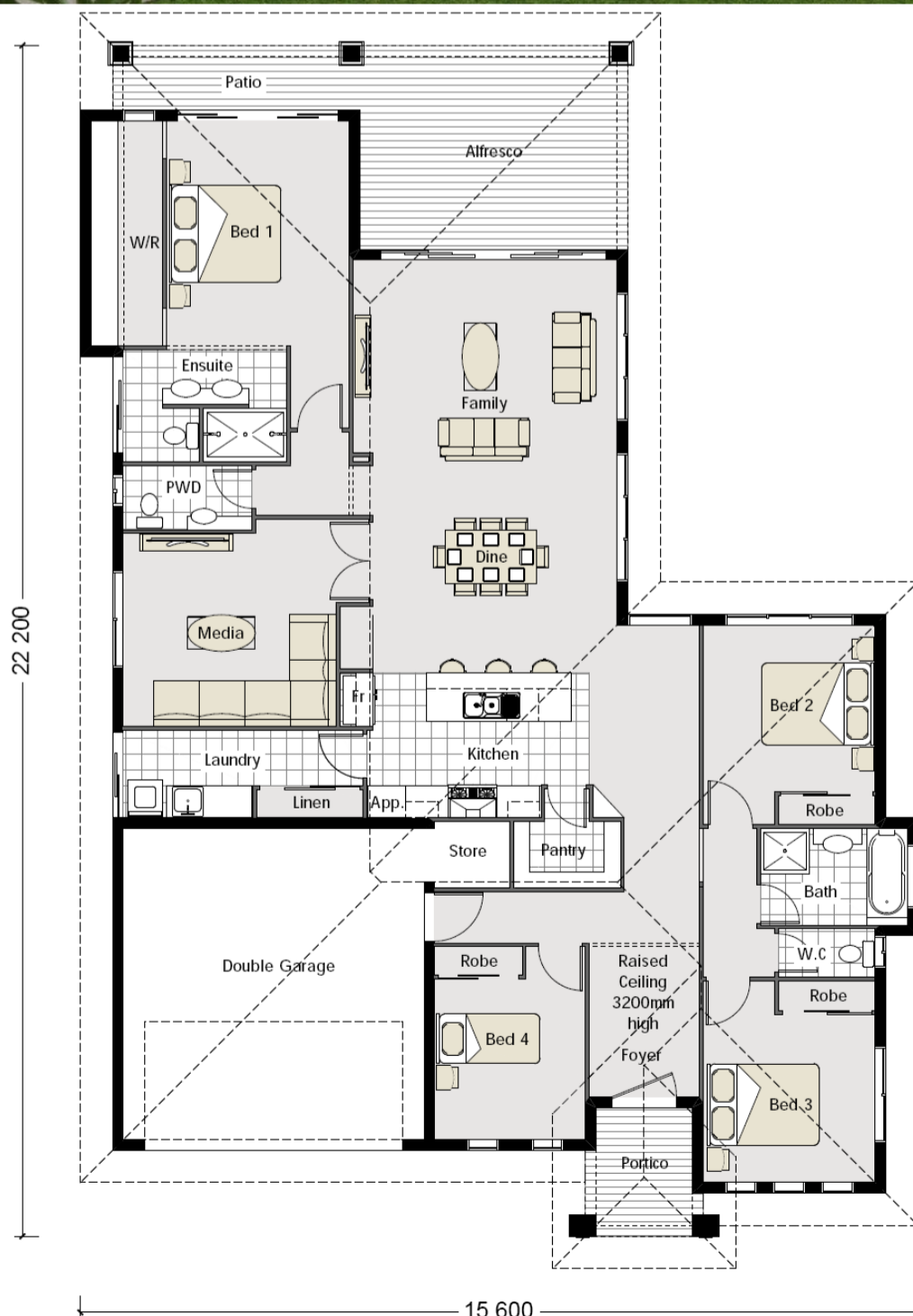


# vista homes



## d e s i g n

### PALM COVE 256



#### DESIGN FEATURES

**Four Bedrooms**  
**Walk in Pantry**  
**Media Room**  
**Open Plan**  
**Ensuite**  
**Designer Kitchen**  
**Double Garage**  
**Porch**  
**Alfresco**

HOUSE AREA SIZES	
Internal	190m <sup>2</sup>
Garage	36.8m <sup>2</sup>
Alfresco	24.5m <sup>2</sup>
Porch	4.8m <sup>2</sup>
<b>TOTAL</b>	<b>256.1m<sup>2</sup></b>

**DESIGN COPYRIGHT**  
**ARCHIMAN PTY LTD**  
**EXCLUSIVE TO VISTA**  
**HOMES & DESIGN**

VISTA HOMES & DESIGN

PH 07 4775 5656

FAX 07 4775 5633

[www.vistahomes.com.au](http://www.vistahomes.com.au)

**SEABREEZE SERIES**